

STH1440

SANY

Quality Changes the World



EFFICIENCY ON THE HIGHEST LEVEL



TELEHANDLER **STH1440**



HONEST, RELIABLE & REACTIVE
SOLUTIONS FOR WORKING AT HEIGHT



CONTACT US

- 0800 865 4455
- info@hiresafesolutions.com
- www.hiresafesolutions.com



TECHNICAL SPECIFICATIONS

OPERATING WEIGHT	STH742	STH936	STH1440	STH1840
	8325 kg	9100 kg	10980 kg	12300

PERFORMANCE PARAMETERS				
Maximum lift capacity	4200 kg	3600 kg	4000 kg	4000 kg
Lift capacity at maximum height	2500 kg	1000 kg	3000 kg	2500 kg
Lift capacity at maximum reach	1300 kg	500 kg	1250 kg	550 kg
Lift height	7000 mm	9600 mm	13970 mm	17550 mm
Maximum forward reach	3710 mm	6444 mm	9690 mm	13400 mm
Carriage crowd angle	45 °	45 °	37 °	37 °
Carriage dump angle	21 °	21 °	13 °	13 °
Frame levelling +/-	NA	NA	9 °	9 °
Outside turning radius (4WS)	3850 mm	3850 mm	3850 mm	3850 mm
Auxiliary hydraulic flow	60 l/min	60 l/min	60 l/min	60 l/min
Auxiliary hydraulic pressure	27 Mpa	27 Mpa	28 Mpa	28 Mpa
Noise at driving position (55 kW)	75 Lpa	75 Lpa	75 Lpa	75 Lpa
Noise to environment (55 kW)	83 Lwa	83 Lwa	83 Lwa	83 Lwa

BOOM PARAMETERS				
Boom (raise/lower)	8/6 sec	11/11 sec	18/13 sec	15/12 sec
Boom (extend/retract)	6.5/4.5 sec	9/7.5 sec	15/13 sec	16/19 sec

TYRES				
Type/size	460/70R24	460/70R24	400/80-24	400/80-24

ENGINE				
Engine brand Deutz	Deutz	Deutz	Deutz	Deutz
Engine emission	Stage 5	Stage 5	Stage 5	Stage 5
Engine model	TD 3.6L	TD 3.6L	TD 3.6L	TD 3.6L
Number of cylinders	4	4	4	4
Engine power rating - Power (kW)	55 (75ph) kW	55 (75ph) kW	55 (75ph) kW	55 (75ph) kW
Max. torque / Engine rotation	340 - @1500 Nm/rpm	340 - @1500 Nm/rpm	340 - @1500 Nm/rpm	340 - @1500 Nm/rpm

TRANSMISSION				
Transmission type	Hydrostatic	Hydrostatic	Hydrostatic	Hydrostatic
Transmission brand	Dana	Dana	Dana	Dana
Axles	Dana	Dana	Dana	Dana
Number of forward gears	2	2	2	2
Number of Reverse gears	2	2	2	2
Max. travel speed	27	27	27	27
Parking brake	One button control parking brake - on/off			
Service brake	Oil-immersed multi-discs braking on front and & rear axle			

HYDRAULIC SYSTEM				
Hydraulic pump type	Gear with priority valve			
Hydraulic pump	Casappa	Casappa	Casappa	Casappa
Hydraulic manifold	Parker	Parker	Walvoil	Walvoil
System pressure	270 bar	270 bar	280 bar	280 bar
Hydraulic flow	95 l/min	95 l/min	100 l/min	100 l/min

SERVICE REFILL CAPACITIES				
Hydraulic system	98 ltr	98 ltr	120 ltr	120 ltr
Fuel tank	150 ltr	150 ltr	150 ltr	150 ltr

CABIN				
-------	--	--	--	--

Cabin is ROPS & FOPS tested & conforms to IOS 3471/3449



HONEST, RELIABLE & REACTIVE
SOLUTIONS FOR WORKING AT HEIGHT

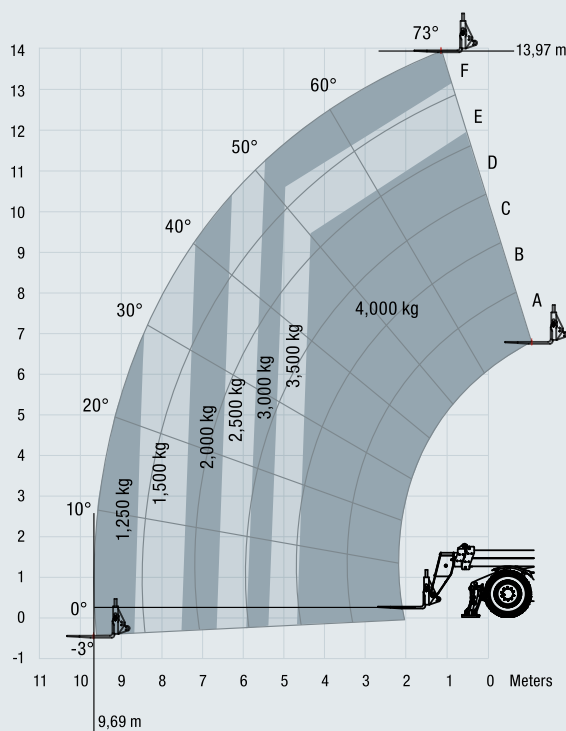


CONTACT US

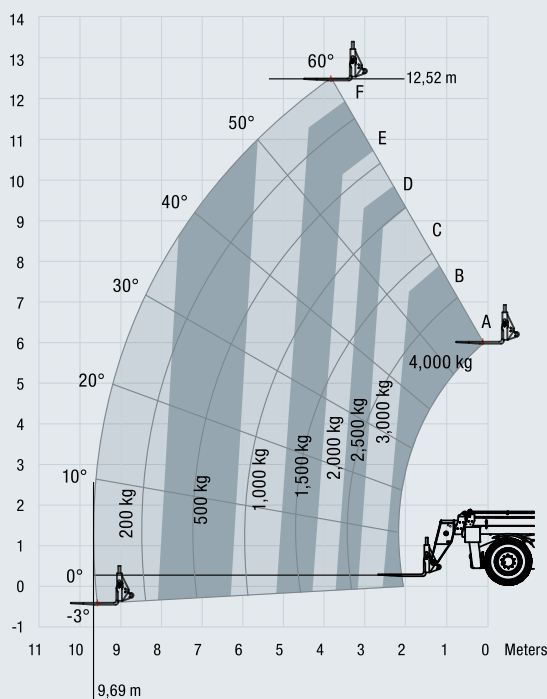
0800 865 4455
info@hiresafesolutions.com
www.hiresafesolutions.com



STH1440 – OUTRIGGERS DOWN



STH1440 – OUTRIGGERS UP



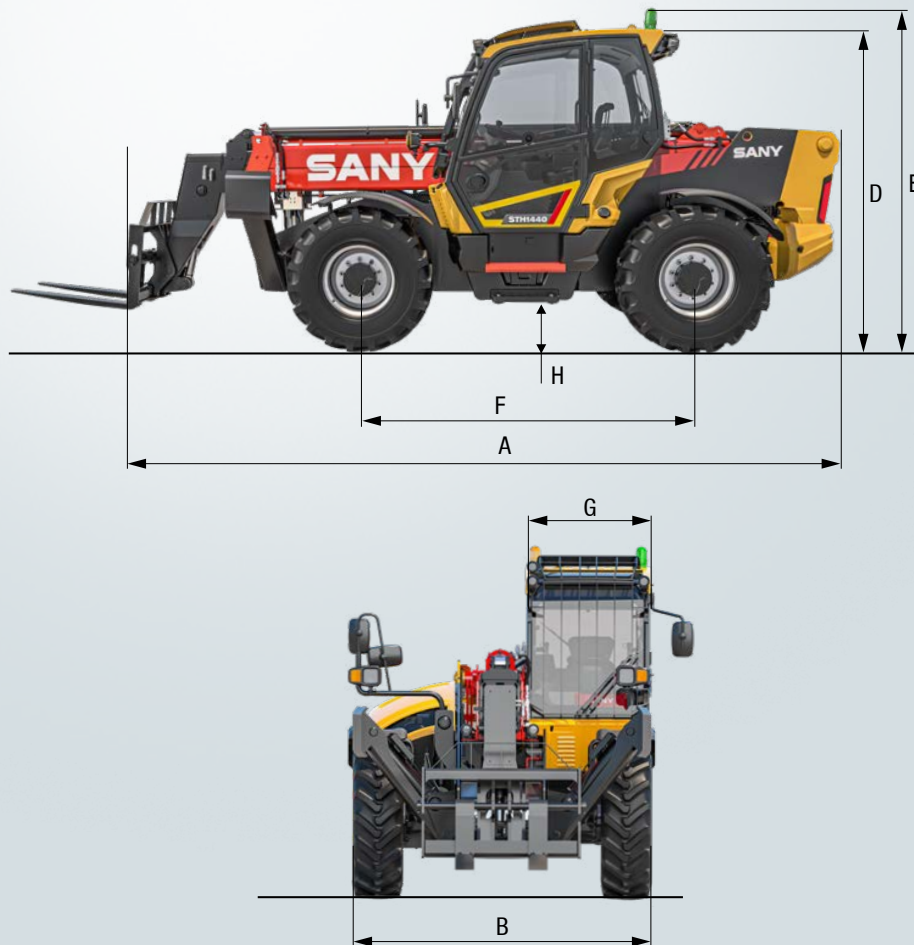
TECHNICAL SPECIFICATIONS

DIMENSIONS

	STH742	STH936	STH1440	STH1840
A Length to front of carriage	4990 mm	4990 mm	6160 mm	6200 mm
B Overall width	2350 mm	2350 mm	2420 mm	2420 mm
C Overall width stabilisers fully deployed	NA	NA	2570 mm	3400 mm
D Height over cab without beacon	2540 mm	2540 mm	2590 mm	2590 mm
E Height over cab with beacon	2665 mm	2665 mm	2750 mm	2720 mm
F Wheelbase	2750 mm	2750 mm	2750 mm	2750 mm
G Overall cabin width	950 mm	950 mm	950 mm	950 mm
H Ground clearance	400 mm	400 mm	370 mm	370 mm
Turning radius over tyres	3850 mm	3850 mm	3850 mm	3850 mm
Operating weight (with Forks)	8325 kg	9100 kg	10980 kg	12300 kg

POINT LOADS

	STH742	STH936	STH1440	STH1840
Machine loaded with models maximum capacity				
Load per front tyre	5403 kg	5030 kg	6608 kg	7200 kg
Load per rear tyre	714 kg	1270 kg	883 kg	950 kg
Load per stabiliser	NA	NA	4913 kg	5225 kg
Machine unloaded with boom in horizontal travel				
Load per front tyre	1878 kg	1960 kg	2677 kg	2970 kg
Load per rear tyre	2275 kg	2550 kg	2841 kg	3180 kg



More features, more possibilities

All SANY telehandlers are comprehensively equipped as standard. With numerous options and attachments, they can be individually configured as necessary – leaving them perfectly equipped for their respective requirements.



The standard and special options differ according to the country in which the machine is delivered. If you have any questions, please contact your dealer directly.

OPERATING COMFORT/CAB

- _____ Ten-inch touchscreen display and encoder navigation
- _____ Air conditioning*
- _____ Radio with Bluetooth and microphone
- _____ Adjustable seat with suspension
- _____ 12 V power socket
- _____ Sunblind, roof and front screen
- _____ Heated rear screen
- _____ Front, roof and rear wiper and washers
- _____ Armrest with storage and USB charger
- _____ Cup and bottle holders
- _____ Fully adjustable steering column
- _____ Intuitive keypad functions (all backlit)
- _____ Telematics

WORKING LIGHTS

- _____ LED working lights on cab and boom
- _____ Full road lights

SAFETY

- _____ CE-/UKCA-certified
- _____ ROPS ISO:3471:2008 and FOPS ISO:3449:2005
- _____ Reversing alarm
- _____ Hi-viz seatbelt
- _____ Integrated reversing camera and distance sensor
- _____ Seat switch and green "ready" beacon
- _____ Load weight monitoring
- _____ Load moment Indicator display

WORK EQUIPMENT

- _____ Three steering modes: 4WS, 2WS and crab
- _____ Chassis levelling +/-9 degrees (STH1440 & STH1840)
- _____ Fully proportional joystick
- _____ Fixed SANY fast fit carriage and 1200 mm forks
- _____ Auxiliary hydraulic venting from cab

* The air-conditioning system contains fluorinated greenhouse gases: Refrigerant type: HFC 134a, global warming potential: 1430, quantity: 65 kg, CO2e: 0.933 tonnes.

SANY genuine parts are designed, tested and manufactured to meet the exact specification and requirements of your machine. SANY parts will fit exactly as needed and will deliver maximum performance when paired with SANY equipment. They also ensure optimum safety for the operator on site and reduce unplanned maintenance and downtime. Ultimately, SANY genuine parts are the best choice for your machine and are backed with a 12 month warranty period.



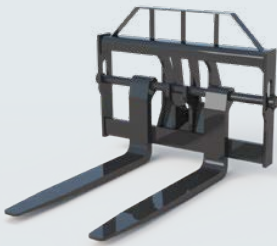
TAILORED ATTACHMENTS FOR VERSATILE APPLICATIONS

In addition to the comprehensive ex-works configuration, the application possibilities of the SANY telehandlers can be expanded further with a range of suitable attachments which can be changed over easily.

CARRIAGE

LIGHTWEIGHT DIRECT MOUNTED FORK FRAME

Designed for the rental industry with forks fully secured.



MANITOU TYPE CARRIAGE AND FORK FRAME

Allows flexibility to use existing attachments for maximum utilisation of equipment.



SANY FAST FIT CARRIAGE

Compatible with a large selection of attachments, the common pick up configuration allows use with existing attachments.



ATTACHMENTS

GENERAL PURPOSE BUCKET

For transporting loose and bulk material with a bucket capacity of 1 m³.



HYDRAULIC FORK POSITIONERS

Control your forks widths from your fingertips, saving time when changing loads and eliminates leaving the cab. Fits to SANY fast fit carriage.



4,000 KG CRANE HOOK

Can be easily fitted to SANY's Fast Fit Carriage for suspended loads when handling slung material. (Included as standard) (STH1440 & STH1840)

