

STEIGER®
T 900 HF




STEIGER® T 900 HF



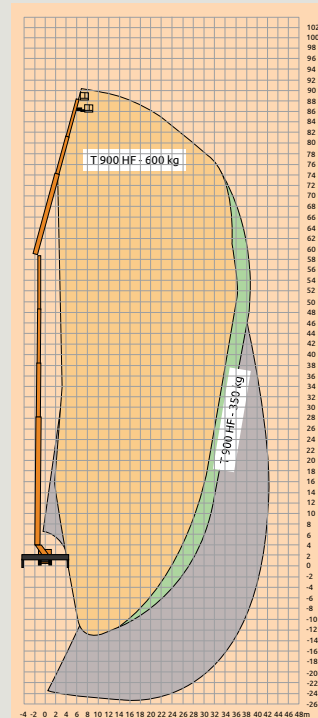
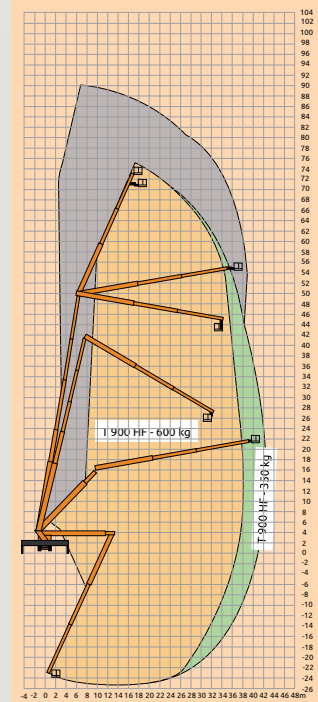
FEATURES

- Not less than 90m working height
- Revolutionary double concept for a enhanced range of application possibilities = better utilisation rate
- Approx. 39m lateral outreach
- Highflex jib (RÜSSEL®) – 220° swiveling range
- Highflex work basket – 440° rotation angle
- Generous 600kg working cage load capacity
- Mounted onto 5-axle chassis with 48t - 52t gross vehicle weight = less logistic planning efforts/costs
- A variety of driver's cabs – sleeper cabs also available
- Minimum orientation/training because of familiar control and operating technology (COCKPIT)
- Wide range of special equipment/optional extras to choose from
- Incredible amount of national and international large-scale equipment references thanks to innovative, state-of-the-art technology
- RUTHMANN SERVICE available worldwide

RUTHMANN's newest truck-mounted working platform: the SKY performance STEIGER® T 900 HF with DRS (Dynamic Reach System) and revolutionary Dual Concept. The T 900 HF is currently the most flexible 90m large-scale machine in the world in the truck-mounted working platform segment, with 42m lateral outreach.

 90m	 88m	 42m	 540°	 220°
 2 X 220°	 600kg	 3.82m x 0.97m	 4m	 14.99m
 1°	 48t - 52t			

working height 90m
maximum outreach 42m
platform capacity 600kg



HONEST, RELIABLE & REACTIVE
 SOLUTIONS FOR WORKING AT HEIGHT



CONTACT US

- ☎ 0800 865 4455
- ✉ info@hiresafesolutions.com
- 🌐 www.hiresafesolutions.com

