

## ELECTRIC ARTICULATING BOOM LIFTS

# AB22EJ PLUS (AB710EJ PLUS)

Compliant with CE/EAC/AS standards

## PRODUCT HIGHLIGHTS

### Outstanding Strength Both Indoors and Outdoors

- Smooth off-road and quiet indoor operation
- 4WD, 40% gradeability
- Standard active oscillation, excellent flexibility

### Excellent Performance, Safety and Reliability

- Smart display for easy machine status and fault diagnosis
- Auxiliary power system
- Rexroth controller comply with ISO13849 standard

### Comfortable and Efficient

- The main boom and secondly boom are equipped with angle sensors, to automatically reduce speed and act as a buffer
- Proportional steering speed reduction technology



#### Standard Features

Active oscillating function	5-in display screen	4WD × 2WS
Proportional control with 3 joysticks	Automotive-grade sleeves for all pipes	Emergency lowering system
Hydraulic platform leveling	Max tilt rating to 5°	Weighing system
Tilt protection system	Horn & buzzer	Emergency stop system
Flashing beacon	Footswitch	Fault diagnosis system
Foam-filled non-marking tires	2.44 m (8') platform	Manual storage box

#### Options & Accessories

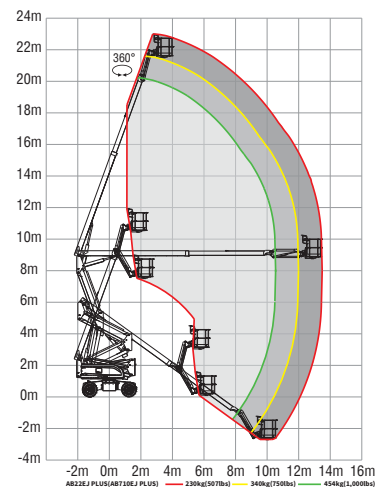
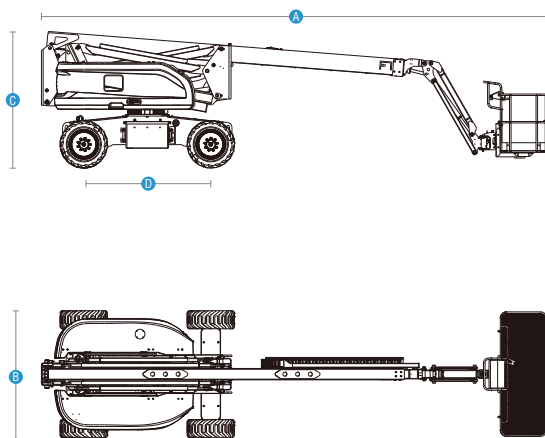
AC power to platform	Solid tires	1.45m (4'9") platform
1.83 m (6') work platform	1.83 m (8')/2.44 m (8') platform with swinging gate	Platform work light
Secondary guarding device	Overhead anti-collision device	Glazier kit (for platform with swinging gate)
Telematics-ready connector	Half mesh (for platform with swinging gate)	



# ELECTRIC ARTICULATING BOOM LIFTS AB22EJ PLUS (AB710EJ PLUS)

Compliant with CE/EAC/AS standards

Model	AB22EJ PLUS (AB710EJ PLUS)
<b>Dimensions</b>	
Max Platform Height	21.6 m (70'10")
Max Working Height	23.6 m (77'5")
Max Horizontal Reach (230 kg,340 kg,454 kg)	13.4 m/11.9 m/10.45 m (44'/39'/34'3")
Max Up and Over Clearance	8.9 m (29'2")
A Stowed Length	9.95 m (32'8")
B Stowed Width	2.49 m (8'2")
C Stowed Height	2.68 m (8'10")
Stowed Length (Transport)	7.73 m (25'4")
Stowed Width (Transport)	2.49 m (8'2")
Stowed Height (Transport)	2.95 m (9'8")
D Wheelbase	2.49 m (8'2")
Ground Clearance	0.39 m (1'3")
Platform Size (L×W×H)	2.44×0.91×1.1 m (8'×3'×3'7")
<b>Performance</b>	
Max Platform Capacity (Unrestricted/Restricted)	230 kg (507 lbs)/340 kg (750 lbs)/454 kg (1,000 lbs)
Max Platform Occupants(Unrestricted/Restricted)	2 persons/ 3 persons
Drive Speed (Stowed)	0~4.8 km/h (0~3 mph)
Drive Speed (Raised)	0~1.1 km/h (0~0.68 mph)
Gradeability	40%
Turntable Rotation	360°/ Continuous
Platform Rotation	180°
Tilt Rating	5°
Turning Radius (Inside/Outside)	2.4 m/5.55 m (7'10"/18'3")
Turntable Tail-Swing	0.84 m (2'9")
Max Allowable Side Force	400 N (90 lbf)
Max Allowable Wind Speed	12.5 m/s (28 mph)
Tire Spec/Type	355/55D625 Foam-filled
<b>Power</b>	
Drive × Steer	4 WD×2 WS
Batteries	48 V, 480 Ah (lead acid battery) 48 V, 500 Ah (lithium battery)
Hydraulic Tank Capacity	130 L (28.6 gal (UK)/34.3 gal (US))
System Voltage	12V DC
<b>Weight</b>	
Weight	10,900 kg (24,030 lbs)
Standards Compliance	CE/EAC/AS



**HONEST, RELIABLE & REACTIVE**  
SOLUTIONS FOR WORKING AT HEIGHT



## CONTACT US

- ☎ 0800 865 4455
- ✉ [info@hiresafesolutions.com](mailto:info@hiresafesolutions.com)
- 🌐 [www.hiresafesolutions.com](http://www.hiresafesolutions.com)

