



6.25

RTH



MAIN SECTORS



INDUSTRY



CONSTRUCTION

Maximum lifting height: 25.00 m
Maximum reach: 21.20 m
Electronically controlled hydrostatic transmission
Automatic levelling device
Scissors stabilizers



HONEST, RELIABLE & REACTIVE
SOLUTIONS FOR WORKING AT HEIGHT

CONTACT US

0800 865 4455

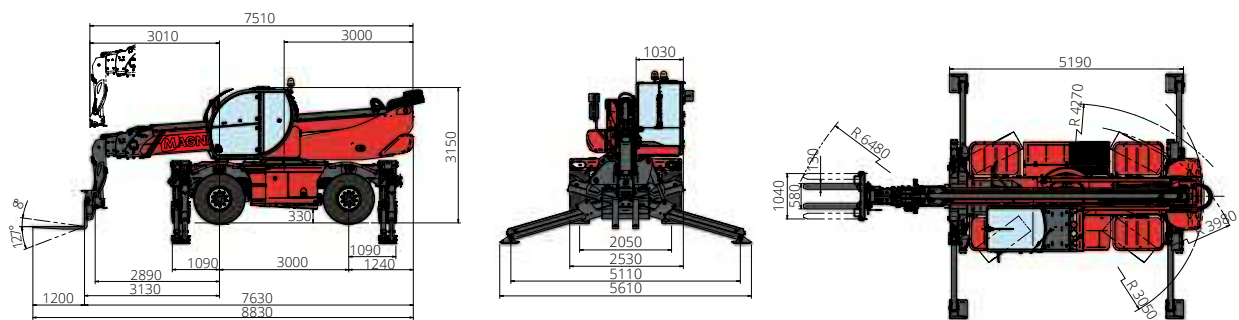
info@hiresafesolutions.com

www.hiresafesolutions.com



| | | | | |
|---------------------------------|---|---|----------------------------------|--|
| MACHINE MODEL | Rotary telescopic handler | RTH 6.25 | | |
| | Maximum lifting capacity | 6,000 kg (centre of gravity 600 mm) | | |
| | Maximum lifting height | 25.00 m | | |
| | Rotation | 360° (continuous) | | |
| ENGINE | Type | Deutz TCD 3,6 L4 Stage V | Deutz TCD 3,6 L4 Stage VI | Deutz TCD 3,6 L4 EDG Stage IIIA |
| | Rated Power | 100 kW (136 hp) @ 2,200 rpm | | |
| | Maximum torque | 500 Nm @ 1,600 rpm | | |
| | Displacement | 3,6 l | | |
| | Cylinders | 4 in line | | |
| | Engine configuration | Turbocharged direct injection diesel | | |
| | Cooling System | Water - intercooler | | |
| TRANSMISSION | Type | Hydrostatic | | |
| | Model | Danfoss/Rexroth | | |
| | Maximum pressure | 480 bar | | |
| | Displacement | Electronically controlled variable displacement pump Variable displacement motor | | |
| | Gearbox | Dropbox, 2 speeds forward-reverse | | |
| AXLES AND BRAKES | Type | Axles with planetary gearboxes | | |
| | Rear axle | Oscillating and steering with hydraulic locking | | |
| | Front axle | Oscillating and steering with levelling +/-8° | | |
| | Service brake | Hydraulically operated wet multi-disk brakes on each axle | | |
| | Parking brake | Hydraulic with negative action | | |
| | Tyre sizes | 445/65 R22,5 | | |
| PERFORMANCE | Max. travel speed | 40 km/h | | |
| | Drawbar pull | 72 kN | | |
| | Gradeability | 41% | | |
| | Turning circle (at forks) | 6,390 mm | | |
| WEIGHTS | Total unladen | 18,000 kg | | |
| | Front axle unladen (boom retracted and lowered) | 8,100 kg | | |
| | Rear axle unladen (boom retracted and lowered) | 9,900 kg | | |
| TANK AND SYSTEM CAPACITIES | Diesel fuel tank | 175 l | 175 l | 175 l |
| | AdBlue | 10 l | 10 l | - |
| | Hydraulic fluid | 165 l | 165 l | 165 l |
| | Engine oil | 9 | 9 | 9 |
| | Cooling liquid | 20 | 20 | 20 |
| HYDRAULIC CIRCUIT FOR MOVEMENTS | Max. working pressure | 350 bar | | |
| | Circuit type | Load sensing | | |
| | Service pump | Danfoss/Casappa - Variable displacement | | |
| | Distributor for boom and turret movements | Danfoss - SIL 2 electro-proportional valve | | |
| | Distributor for stabilisers | Bosch Rexroth - Electro-hydraulic actuators | | |
| | Movements control | 2 no. two-axis Danfoss joysticks with deadman safety device Managed via CAN bus | | |
| STANDARDS MET | EN 1459-2: concerning standards for slewing variable-reach trucks EN 13000: concerning standards for mobile cranes EN 280: concerning standards for mobile elevating work platforms FOPS/ROPS EU 2016/1628: concerning engine emissions standards | | | |

The data in this brochure are informative and subject to change without notice



www.magnith.com

REV09



HONEST, RELIABLE & REACTIVE
SOLUTIONS FOR WORKING AT HEIGHT

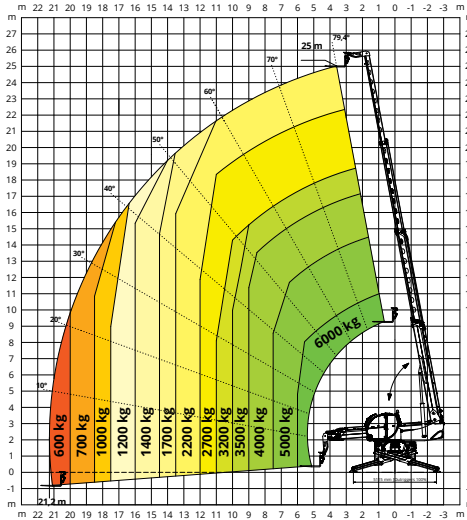
CONTACT US

- 0800 865 4455
- info@hiresafesolutions.com
- www.hiresafesolutions.com



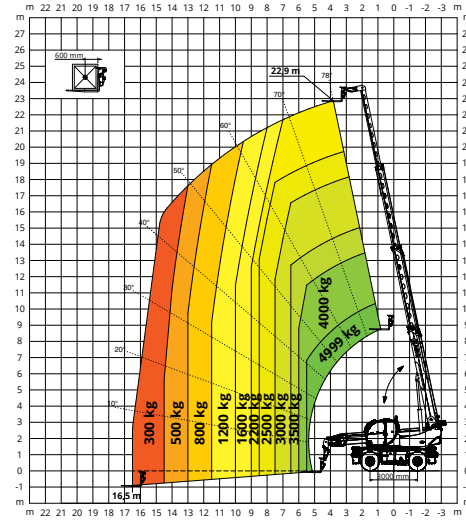
ON STABILISERS

360° LOAD CHART ON FULLY EXTENDED STABILISERS



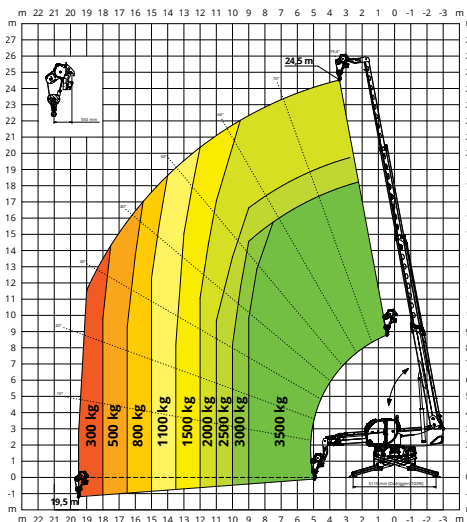
ON TYRES

FRONTAL LOAD CHART ON TYRES



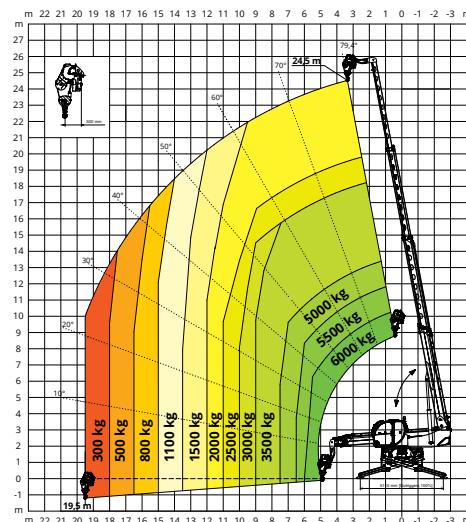
W 3,5

WINCH 3,500 kg



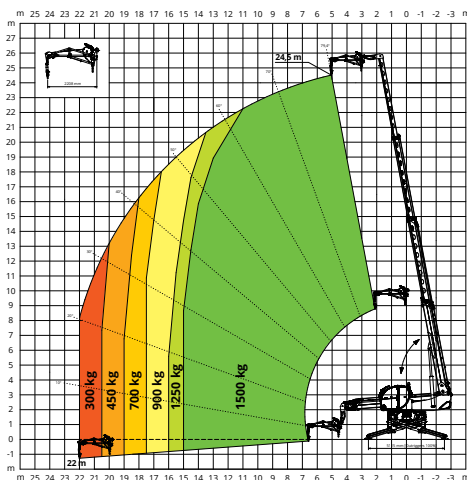
W 6

WINCH 6,000 kg



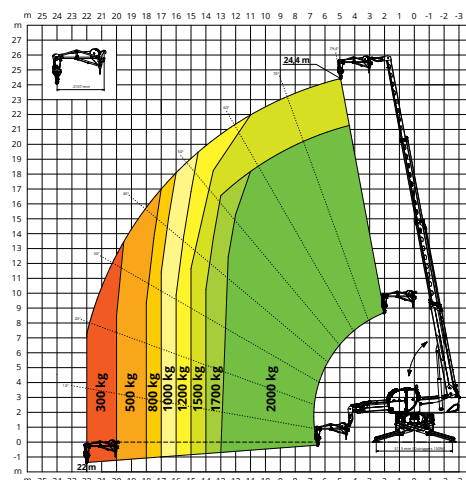
JW 1500

JIB WITH WINCH 1,500 kg



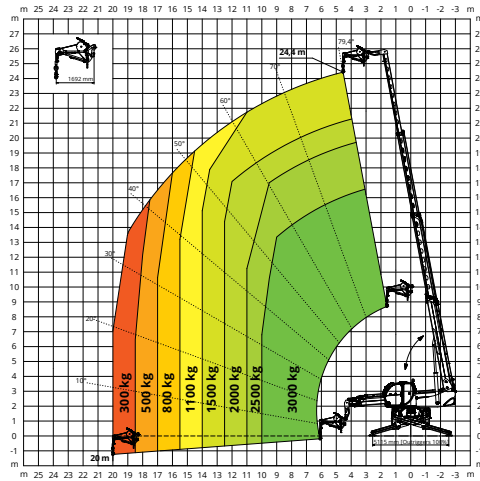
JW 2000

JIB WITH WINCH 2,000 kg



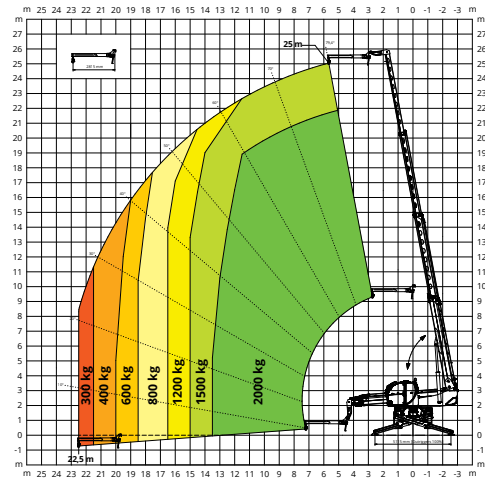
JW 3000

JIB WITH WINCH **3,000 kg**



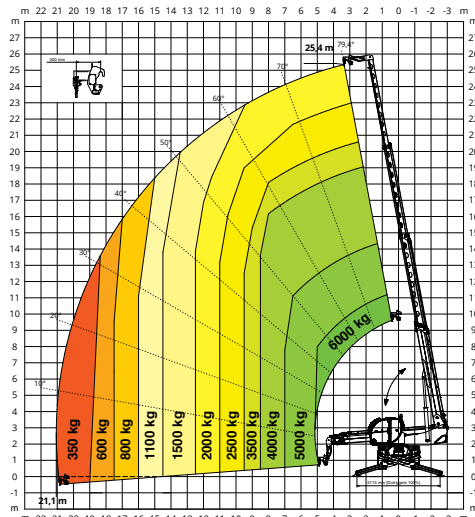
J 2000

JIB **2,000 kg**



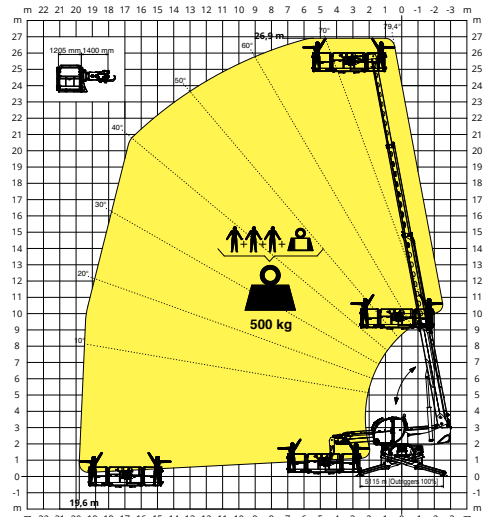
H 6

HOOK **6,000 kg**



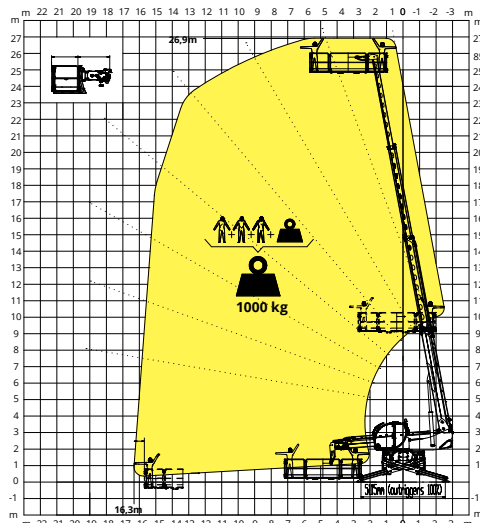
REP 2-4,5

ROTATING EXTENDABLE BASKET **500 kg**



REP 10.2-4,7

ROTATING EXTENDABLE BASKET **1,000 kg**



REP 8.2-4,7 W0,3

BASKET 4,7 m **800 kg**
WITH WINCH **300 kg**

