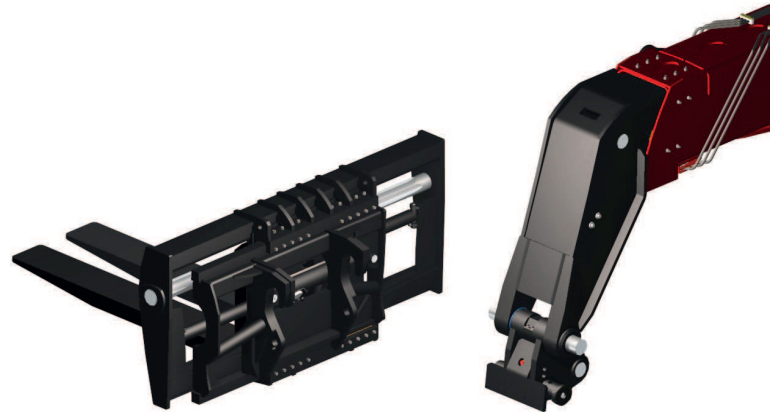
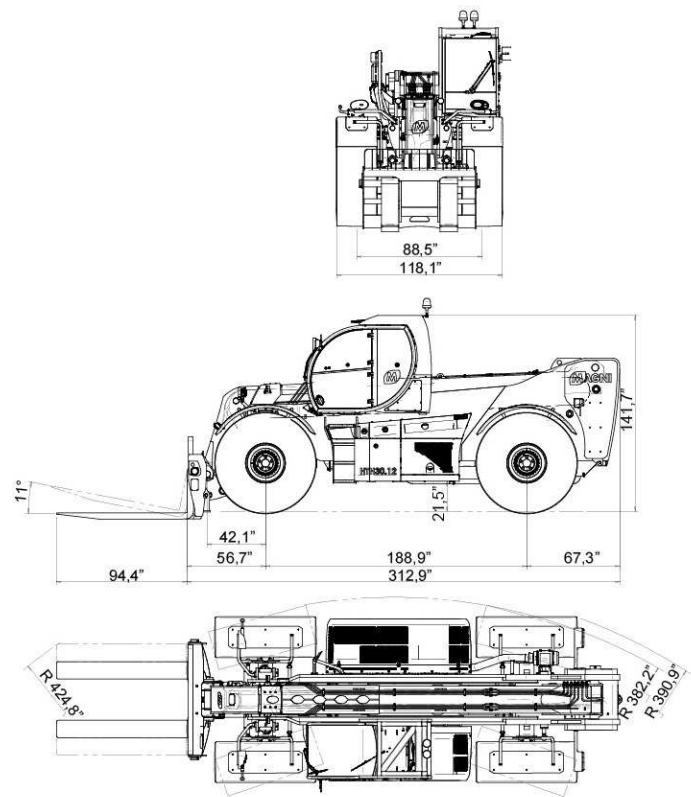
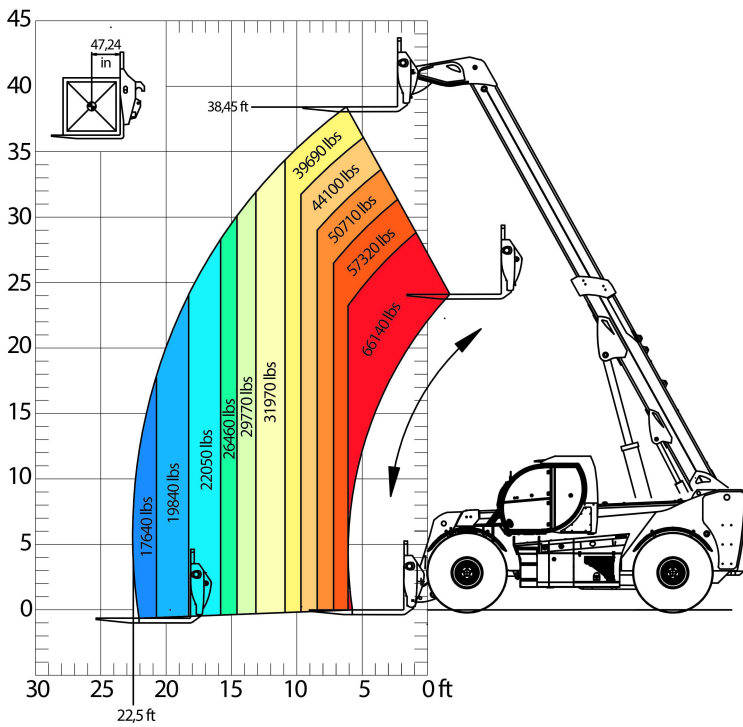




HTH30.12



Load chart fork carriage



Clamp for wheels handling, with a capacity up to 17.636 lbs from 24 to 63 inches .

- MAGNI patented quick fit of the attachment
- Attachments automatic recognition RFID system



| | | |
|-------------------------------|---|---|
| LIFT CAPACITY | 59.524 lbs at 47,2" load center | |
| MAXIMUM LIFTING HEIGHT | 35,6 ft | |
| MAXIMUM REACH | 21.6 ft | |
| FORKS | Fork carriage with forks positioner device 78,7 mm width Forks 11,81" x 4,52" x 94,48" | |
| CAB | FOPS-ROPS tested hermetic cab with protectors Front, rear and upper wiper Headlights for road circulation, flashing beacon Rear view mirrors Heating - Air conditioning | |
| CONTROLS | Multi-function electro proportional joystick | |
| BRAKE SYSTEM | Hydraulic servo-assisted multidisc brake in oil bath on both axles, with double circuit Negative parking brake | |
| ENGINE | Mercedes OM 936 LA.E4-1 Turbo intercooler 6 cylinders / 7.7 l Power 260 kW - 353 HP Max rpm = 2.200 Max torque 1.400 Nm from 1.200 to 1.600 rpm Electronic injection (single pump each injector) Liquid cooling system | Mercedes OM 926 LA.E3A/1 6 cylinders / 7.2 l Power 240 kW - 326 HP Max torque 1.300 Nm from 1.200 to 1.600 rpm |
| AXLES | Heavy Duty with 4-stage epicyclic reduction One steering cylinder each axle Levelling correction front axle at + 10° on the right and +10° on the left 3 types of steering: - with front steering - with round steer - with crab steering Tilting rear axle | |
| PERFORMANCE | Max. travel speed: 25 km/h Drawbar pull: 180 kN Gradeability: 30% Turning radius (end of fork): 424,8" | |
| WEIGHTS | Total without fork carriage: 90.169 lbs Front axle unladen (boom retracted and lowered): 41226 lbs Rear axle unladen (boom retracted and lowered): 48.942 lbs | |
| TRANSMISSION | Rexroth hydrostatics Variable displacement hydrostatic pump with electronic control One variable displacement hydrostatic motor Hydraulic gearbox with 2 speeds forward / reverse | |
| HYDRAULIC CIRCUIT | Load sensing piston pump Circuit at 350 bar Rexroth Proportional hydraulic distributor Suction and return line filters High pressure flexible hoses | |
| TANKS CAPACITIES | Engine oil = 29,5 l Colling liquid = 25 l Hydraulic oil tank = 310 l Fuel tank = 300 l | Engine oil = 16 l |
| TYRES DIMENSIONS | 29,5 - R25 ** two each axle, driving and steering | |
| SAFETY | Electronic safety system which controls the load with definition of the lifted load, radius and comparison with the diagrams stored. Block of aggravating movements of the load. Safety valves on cylinders | |

The data in this brochure are informative and subject to change without notice