

Genie® Z[®]-45/25J Bi-Energy

Specifications

Models Z-45/25J BE

Measurements	US	Metric
Working height max. ⁽¹⁾	51 ft 9 in	15.94 m
Platform height max.	45 ft 9 in	13.94 m
Horizontal reach max.	25 ft 1 in	7.65 m
Up and over clearance max.	23 ft 9 in	7.24 m
A Platform length	2 ft 6 in	0.76 m
B Platform width	6 ft	1.83 m
C Height - stowed	6 ft 7 in	2.00 m
D Length - stowed	22 ft 5 in	6.83 m
E Width	5 ft 10.25 in	1.79 m
F Wheelbase	6 ft 8 in	2.03 m
G Ground clearance - center	9.5 in	0.24 m

Productivity

Lift capacity max. - unrestricted	500 lb	227 kg
Platform rotation	160°	
Jib length	5 ft	1.52 m
Vertical jib rotation	135°	
Turntable rotation	355°	
Turntable tailswing	0 in	0 cm
Drive speed - stowed ⁽²⁾	3.0 mph	4.8 km/h
Drive speed - raised	0.61 mph	1.0 km/h
Gradeability - stowed ⁽²⁾	30%	
Tilt sensor activation (front to back/side to side)	2.5° - 4.5° / 4.5°	
Turning radius - inside/outside	6 ft/14 ft	1.8 m/4.27 m
Tires (solid, non-marking)	9×14.5 in	0.23×0.37 m

Power

Power	48V DC (8×6V 350Ah)	
Auxiliary power unit	24V DC	
Hydraulic tank capacity	8 gal	30.3 L
Fuel tank capacity	9 gal	34 L

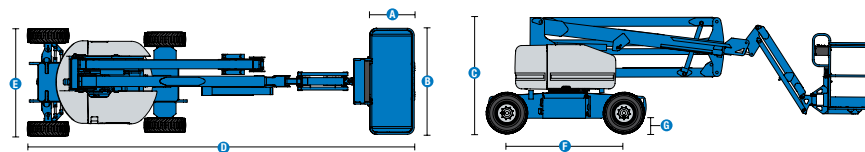
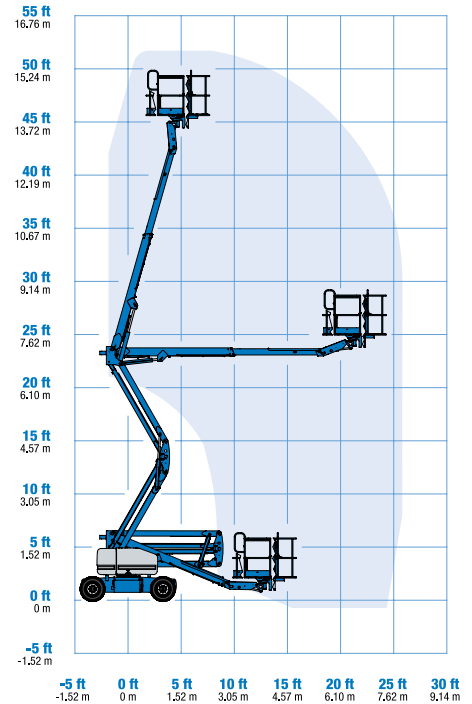
Weight⁽³⁾ and Floor Loading⁽⁴⁾

Weight	16,315 lb	7,400 kg
Tire contact pressure	100 psi	689 kPa
Occupied floor pressure (tires)	325 psf	15.56 kPa

Sound and Vibration Levels

Sound Pressure level (ground workstation)	78 dBA
Sound Pressure level (platform workstation)	76 dBA
Vibrations	8 ft 2 in/s ² 2.5 m/s ²

Range of motion Z-45/25J BE



Genie® Z[®]-45/25J Bi-Energy

SKU: Standard Model

- **Z45JDC01CV0035:** Z-45/25J BE, Bi-Energy, 110V, 2WD
- **Z45JDC01CE0003:** Z-45/25J BE, Bi-Energy, 220V, 2WD

* Build to Order

Option availability		S	S+	BtO
Power	Standard FLA flooded lead acid battery	✓	✓	✓
	Diesel catalytic scrubber muffler (T4i/Stage IIIA)			○
	13.3 hp, 9.9 kW, Kubota powered alternator	✓	✓	✓
	Low voltage interrupt (LVI) with battery charge indicator (BCI)	✓	✓	✓
Platform	6ft/1.83m dual-entry platform with side swing gate	✓	✓	✓
	Power to platform, no RCBO	✓	✓	✓
	Power to platform with RCBO		○	○
	Air line to platform			○
	Control box covers		○	○
	Lift Guard Half Mesh panels			○
	Light Package: drive and work lights			○
	Platform auxiliary top rail			○
	Platform level cutout		○	○
	4ft/1.2m Jib	✓	✓	✓
	AC Power cord to platform	✓	✓	✓
	Drive enable system	✓	✓	✓
	Horn	✓	✓	✓
	Lift Guard Contact Alarm	✓	✓	✓
	Lift Tools Work Tray	✓	✓	✓
	Platform load sense system	✓	✓	✓
	Proportional controls	✓	✓	✓
Self-leveling platform	✓	✓	✓	
Travel alarm package: flashing beacons, descent, travel and tilt alarms	✓	✓	✓	
Chassis	Lift Connect Telematics	✓	✓	✓
	Lift Connect with Access Manager upgrade		○	○
	Eco32 biodegradable hydraulic oil			○
	Industrial, foam-filled non-marking tires			○
	Industrial, foam-filled tires	✓	✓	✓
	Chassis tilt lift function cut-out		○	○
	Active oscillating axle	✓	✓	✓
	Chassis tilt drive function cut-out	✓	✓	✓
	Dual parallelogram lift linkage	✓	✓	✓
	Electric brake release	✓	✓	✓
Hour meter	✓	✓	✓	
On-board diagnostic system	✓	✓	✓	

- S Standard
- S+ Standard +
- BtO Build to Order
- ✓ Standard Features
- Options



Quiet Operation



Zero Tailswing



Dual Parallel Linkage



Genie Genuine Accessories⁽¹⁾

- Lift Tools Productivity Tools
- Lift Connect Telematics
- Tech Pro Link Handheld Device

(1) More accessories available from Genie Genuine Parts.

Product specifications are subject to change without notice or obligation. Photographs and/or drawings herein are for illustrative purposes only. Refer to the appropriate Operator's Manual for instructions on proper equipment use. Failure to follow instructions in the Operator's Manual may result in serious injury or death. The only warranty applicable to our equipment is the standard written warranty applicable to the particular product and sale and we make no other warranty, express or implied. Products and services listed may be trademarks, service marks or trade names of Terex Corporation and/or their subsidiaries in the USA and many other countries. Terex, Genie, Quality By Design, Xtra Capacity, Lift Power, Lift Guard, Lift Tools, Lift Connect and Tech Pro Link are registered trademarks of Terex Corporation or its subsidiaries.



HONEST, RELIABLE & REACTIVE
SOLUTIONS FOR WORKING AT HEIGHT



CONTACT US

- ☎ 0800 865 4455
- ✉ info@hiresafesolutions.com
- 🌐 www.hiresafesolutions.com

